

### GENERAL CHARACTERISTICS

**MODULAR** level switch with 1 electrical contact. The user is able to obtain a level switch of the desired length interposing an extension pipe between the control unit and the process fitting. The electrical contact inside the control unit is sealed and immersion proof. The assembly kit can be selected from a wide series of options that allows the user to adapt it to the most common types of installation.

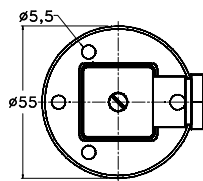
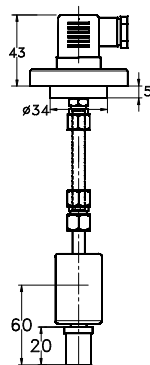
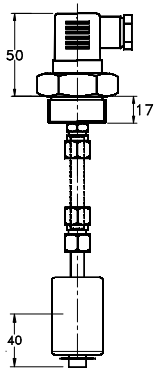
- Closed cell float.
- Sealed contact and immersion proof.
- Easy mounting, threaded or flanged.
- Pipe and fittings kit for assembling.
- Operating ambient temperature -30 / +55 ° C, RH 90%
- DIN 43650 Plug.
- Minimum degree of protection IP65.



### COMPOSITION OF THE KIT Tab.1

Component		Description									Code	
<b>Control unit</b>	<b>S1</b>	Float	SPANSIL – Butadiene Acrylonitrile Copolymer closed cells									<b>B45</b>
<b>Nickel plated brass</b>	<b>B</b>		Ø 30 x 45 mm		S.G. 0, 35			20 Bar			-	
<b>1/8" GAS male thread</b>	-	Electrical contact	SPST	N.C.	N.O. Overturning the float of 180°			250V	80W	80VA	1,3A	<b>4</b>
<b>Cable length 4 m</b>	<b>4M</b>		SPDT	Changeover contact				230V	60W	60VA	1,0A	<b>7</b>
<b>Process connection</b>		Brass	Threaded		1" UNI 228/1 male thread			SW 40			<b>25GO</b>	
			Flanged		Double fixing (2 or 3 holes)			Ø 55 mm			<b>FOPX</b>	
<b>Fitting assembly</b>			N.1	1/8" Gas-female thread			N.1	1/8" Gas-male thread			-	
<b>Electrical output</b>			DIN 43650 Plug					IP 65			<b>S1</b>	
<b>Max. temperature °C</b>			105 °C									<b>L</b>
<b>Sealing gasket</b>			NBR flat gasket									<b>1</b>
<b>Built-in thermostat °C</b>	On request		30	40	50	60	70	80	90	100	N.O.	<b>°CT1</b>
											N.C.	<b>°CT2</b>
<b>Extension pipe Ø 8 mm</b>	On request	Brass	<b>0500 mm.</b>		<b>1000 mm.</b>		<b>1500 mm.</b>			<b>KIT.Pipe</b>		

### DIMENSIONS



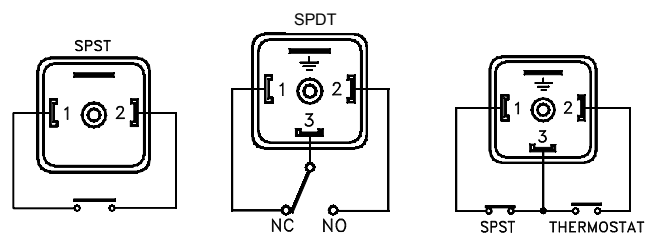
Flanged version  
2 holes on Ø43 mm  
3 holes on Ø42 mm

### WIRING Tab.2

With the thermostat option the customer must define the level contact status. Level contact and the thermostat contact are common wired.

I	C	1	2	3
Independent	Common	NO	NC	SPDT

Wiring Contact status in no level condition



### NOMENCLATURE

<b>KIT.S1</b>	<b>B45</b>	<b>4</b>	<b>B</b>	<b>25GO</b>	<b>S1</b>	<b>L</b>	<b>1</b>	<b>I2</b>	<b>60T1</b>	<b>4M</b>
---------------	------------	----------	----------	-------------	-----------	----------	----------	-----------	-------------	-----------

o.z. MERES, HENNLICH s.r.o. | meres@hennlich.cz | +420 416 711 203 | www.hennlich.cz/meres

											Tab.1	Control unit rod material	
											Tab.1	Process connection	
											Tab.1	Electrical output	
											Tab.1	Temperature class	
											Tab.1	Sealing gasket	
											Tab.2	Wiring	
											Tab.1	Thermostat (on request)	
											Tab.1-2	Cable length	
<b>KIT/S1.B45 PIPE</b>			<b>1000</b>									Tab.1	Extension pipe length