



Type	Material
------	----------

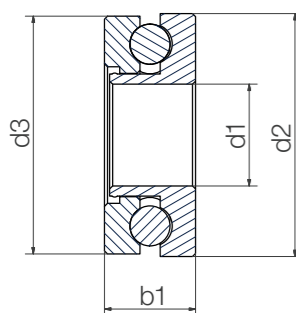
BB-51104-B180-ES-D

- Ball bearings
- Dimensions according to DIN 711
- Face/cage material
- Ball material
- Double row

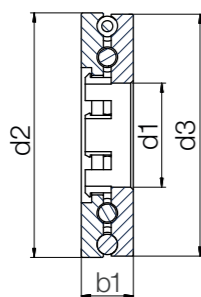
Options
Ball material
 ES = Stainless steel
 GL = Glass
Suffix
 Blank = Single row
 D = Double row



Single or double row,
with stainless steel or glass balls



Single row bearing



Double row bearing

Technical data

Installation size	Single row	Double row	Load capacity		Max. speed [rpm]	Weight	
			stat. [N]	dyn. [N]		B180/ES [g]	B180/GL [g]
51100	●	-	200	250	600	6.61	4.12
51104	●	-	650	810	460	13.72	8.19
51104	-	●	975	1,215	460	18.96	8.99

Dimensions [mm]

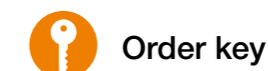
Inner Ø	Outer Ø		Width	Cage/ball material combination		Part No.
	d1	d2		B180/ES	B180/GL	
10	24	23.5	9	●	●	BB-51100-B180-□
20	35	34.5	10	●	●	BB-51104-B180-□
20	47	46.5	10	●	●	BB-51104-B180-□-D



Order example:
 BB-51100-B180-ES = Thrust bearing with race material xirodur® B180, B180 cage and stainless steel balls



Available from stock



Type	Material
------	----------

BB-6004TW-B180-ES-SL

- Ball bearings
- Dimensions according to DIN 625-1
- Axial thrust washer
- Face material
- Ball material
- Slim Line

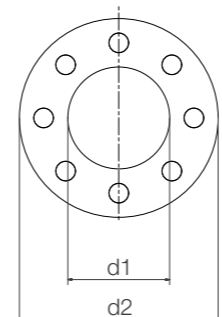
Options
Ball material
 ES = Stainless steel
 GL = Glass
Suffix
 Blank = Standard
 SL = Slim Line



Standard type with stainless steel or glass balls



Slim Line design with stainless steel or glass balls



Technical data (related to metallic shafts)

Installation size	Slim Line	Recommended load capacity		Max. speed [rpm]	Weight	
		stat. [N]	dyn. [N]		B180/ES [g]	B180/GL [g]
626	-	341	425	2,000	1.35	0.81
608	-	482	600	1,700	2.25	1.17
6000	-	610	782	1,500	3.04	1.50
6000	●	405	500	1,500	2.09	1.20
6004	-	975	1,215	700	6.87	4.41
6006	-	925	1,540	600	5.51	3.39
6006	●	520	680	600	4.23	2.98

Dimensions [mm]

Inner Ø	Outer Ø		Width		Race/ball material combination		Part No.
	d1	d2	b1	b2	B180/ES	B180/GL	
6.2	18.8	2.0	3.18	●	●	BB-626TW-B180-□	
8.2	21.8	2.0	3.97	●	●	BB-608TW-B180-□	
10.2	25.8	2.0	4.76	●	●	BB-6000TW-B180-□	
10.2	25.8	2.0	3.97	●	●	BB-6000TW-B180-□-SL	
21.0	41.0	3.0	4.76	●	●	BB-6004TW-B180-□	
29.9	45.5	2.5	4.76	●	●	BB-6006TW-B180-□	
29.9	45.5	2.5	3.97	●	●	BB-6006TW-B180-□-SL	



Order example:
 BB-6000TW-B180-ES-SL = Thrust washer with race material xirodur® B180, stainless steel balls, Slim Line version



Available from stock