



# Static spray balls »RinseClean« Series 5B2/5B3

## Series 5B2/5B3

The spray ball design has proven itself in many applications. It can be used in areas with high hygienic requirements and high temperatures. Our RinseClean spray ball is available with various slip-on connections, as well as in threaded or welded versions.



	<b>Max. tank diameter [m]</b>	0	1	2	3	4	5	6	7	8	9
--	-------------------------------	---	---	---	---	---	---	---	---	---	---



**Material**  
316L SS,  
Pin: 316L SS



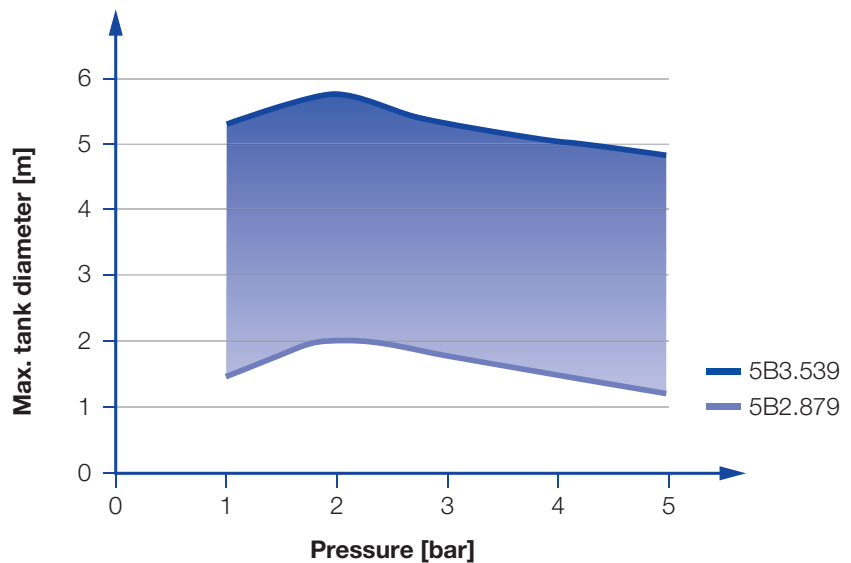
**Max. temperature**  
200 °C



**Recommended operating pressure**  
2 bar

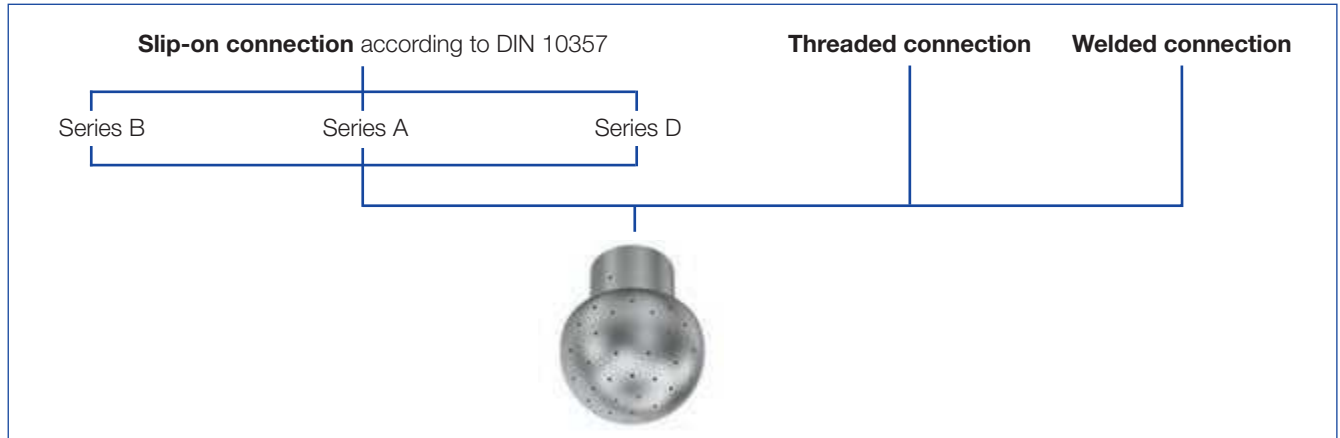


**Installation**  
Operation in every direction is possible

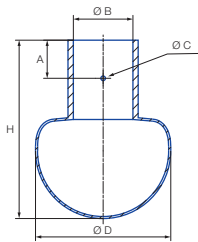


Overview of the tank diameter, depending upon the pressure of series 5B2/5B3

## Connection options



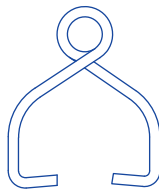
### Slip-on connection



Dimensions slip-on connection according to DIN 10357



Pin 1



Pin 2-5

With the slip-on connection, the spray ball is pushed onto the customer's connection pipe and secured with the supplied cotter pin. Lechler offers the right connection sizes for the three most common pipe standards.

Pin	Ordering no.
1	<b>095.013.1Y.06.55.0</b>
2	<b>095.013.1Y.06.58.0</b>
3	<b>095.013.1Y.06.56.0</b>
4	<b>095.013.1Y.06.59.0</b>
5	<b>095.013.1Y.06.57.0</b>

### Slip-on connection according to DIN EN 10357 series B (replaces DIN 11850 series 1)

Spray angle	Ordering no.	E Ø [mm]	$\dot{V}$ [l/min]					Dimensions [mm]					Max. tank diameter [m]	
			p [bar] (p <sub>max</sub> = 5 bar)					Ø D	Height H	Con- nection Ø B	Ø C	Distance to bore hole A		Pin
			0.5	1	2	3	at 40 psi [US gal/min]							
360° 	<b>5B2.879.1Y.D0.80</b>	0.8	8	11	15	18	4.7	20	37	8.2	2.2	9	1	2.0
	<b>5B3.089.1Y.D1.20</b>	1.0	25	35	50	61	15.5	28	42	12.2	2.2	9	1	2.2
	<b>5B3.139.1Y.D1.20</b>	1.6	33	46	65	80	20.2	28	42	12.2	2.2	9	1	2.3
	<b>5B3.209.1Y.D1.80</b>	1.5	50	71	100	123	31.0	28	42	18.2	2.2	9	1	2.5
	<b>5B3.309.1Y.D2.20</b>	1.7	90	127	180	221	55.8	64	84	22.2	2.2	18	2	3.5
	<b>5B3.379.1Y.D2.80</b>	2.1	130	184	260	318	80.7	64	84	28.2	2.2	18	3	5.2
	<b>5B3.389.1Y.D4.00</b>	2.1	140	198	280	343	86.9	64	84	40.3	2.2	18	4	5.2
	<b>5B3.409.1Y.D3.40</b>	2.3	160	226	320	392	99.3	64	84	34.2	2.2	18	4	5.2
	<b>5B3.449.1Y.D2.80</b>	3.0	205	290	410	502	127.2	64	84	28.2	2.2	18	3	5.4
	<b>5B3.489.1Y.D3.40</b>	2.9	255	361	510	625	158.2	64	84	34.2	2.2	18	4	5.5
<b>5B3.499.1Y.D4.00</b>	2.8	270	382	540	661	167.5	64	84	40.3	2.2	18	4	5.5	
	<b>5B3.539.1Y.D5.20</b>	3.2	335	474	670	821	207.8	90	111	52.3	3.0	25	5	5.6
180° 	<b>5B3.083.1Y.D1.80</b>	1.2	25	35	50	61	15.5	28	42	18.2	2.2	9	1	2.2
	<b>5B3.253.1Y.D2.20</b>	1.8	65	92	130	159	40.3	64	84	22.2	2.2	18	2	3.0
	<b>5B3.323.1Y.D2.80</b>	2.3	100	141	200	245	62.0	64	84	28.2	2.2	18	3	3.5
	<b>5B3.463.1Y.D5.20</b>	3.3	230	325	460	563	142.7	90	111	52.3	3.0	25	5	5.4
180° 	<b>5B3.114.1Y.D1.80</b>	1.4	30	42	60	74	18.6	28	42	18.2	2.2	9	1	2.2
	<b>5B3.274.1Y.D2.20</b>	2.3	75	106	150	184	46.5	64	84	22.2	2.2	18	2	3.0
	<b>5B3.394.1Y.D2.80</b>	3.0	145	205	290	355	90.0	64	84	28.2	2.2	18	3	5.0
	<b>5B3.444.1Y.D5.20</b>	3.2	200	283	400	490	124.1	90	111	52.3	3.0	25	5	5.2

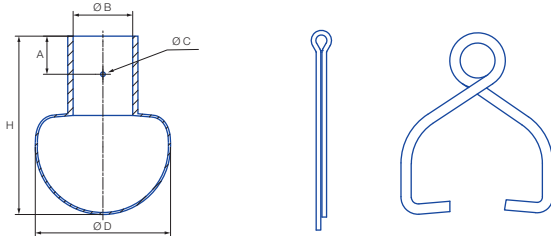
E = narrowest free cross-section

Continued on next page.



# Static spray balls »RinseClean« Series 5B2/5B3

## Slip-on connection





Dimensions slip-on connection according to DIN 10357

Pin 1

Pin 2-5



## Slip-on connection according to DIN EN 10357 series A (replaces DIN 11850 series 2)

Spray angle 	Ordering no. Type	E Ø [mm]	V [l/min]					Dimensions [mm]						Max. tank diameter [m]
			p [bar] (p <sub>max</sub> = 5 bar)					Ø D	Height H	Con- nection B	Ø C	Distance to bore hole A	Pin	
			0.5	1	2	3	at 40 psi [US gal/min]							
360° 	5B3.149.1Y.D2.90	0.9	35	50	70	86	21.7	64	84	29.2	2.2	18	3	2.3
	5B3.299.1Y.D2.90	1.5	83	117	165	202	51.2	64	84	29.2	2.2	18	3	3.2
	5B3.359.1Y.D2.90	1.9	115	163	230	282	71.3	64	84	29.2	2.2	18	3	5.0
	5B3.399.1Y.D2.90	2.2	150	212	300	367	93.1	64	84	29.2	2.2	18	3	5.2
	5B3.429.1Y.D2.90	2.6	180	255	360	441	111.7	64	84	29.2	2.2	18	3	5.2
	5B3.539.1Y.D5.30	3.2	335	474	670	821	207.8	90	111	53.3	3.0	25	5	5.6

E = narrowest free cross-section

The maximum tank diameter shown above applies for the recommended operating pressure and is indicative only. The cleaning result is also affected by the type of soiling.

## Slip-on connection according to DIN EN 10357 series D (ASME BPE 1997, OD-tube compatible)

Spray angle 	Ordering no. Type	E Ø [mm]	V [l/min]					Dimensions [mm]						Max. tank diameter [m]
			p [bar] (p <sub>max</sub> = 5 bar)					Ø D	Height H	Con- nection B	Ø C	Distance to bore hole A	Pin	
			0.5	1	2	3	at 40 psi [US gal/min]							
360° 	5B3.089.1Y.A1.00	1.0	25	35	50	61	15.5	28	42	9.8	2.2	9	1	2.2
	5B3.209.1Y.A1.90	1.5	50	71	100	123	31.0	28	42	19.3	2.2	9	1	2.5
	5B3.309.1Y.A1.90	1.7	90	127	180	221	55.8	64	84	19.3	2.2	18	1	3.5
	5B3.379.1Y.A2.60	2.1	130	184	260	318	80.7	64	84	25.6	2.2	18	3	5.2
	5B3.449.1Y.A3.80	3.0	205	290	410	502	127.2	64	84	38.3	2.2	18	4	5.4
	5B3.539.1Y.A5.10	3.2	335	474	670	821	207.8	90	111	51.1	3.0	25	5	5.6

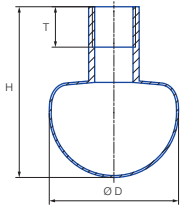
E = narrowest free cross-section

The maximum tank diameter shown above applies for the recommended operating pressure and is indicative only. The cleaning result is also affected by the type of soiling.

## Slip-on information



- Pin made of 316L SS is included.
- Depending on diameter of adapter, the flow rate can increase due to leakage between connecting pipe and static spray ball.

## Threaded connection



**Female thread**  
 (exception 5B2.872.1Y.AA.00 has a male thread)

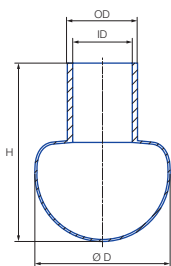
## Threaded connection

Spray angle 	Ordering no.	Con- nection BSPP	E Ø [mm]	V̇ [l/min]					Dimensions [mm]			Max. tank diameter [m]
	Type			p [bar] (p <sub>max</sub> = 5 bar)					Ø D	Height H	Screw-in length T	
				0.5	1	2	3	at 40 psi [US gal/min]				
360° 	5B2.879.1Y.AA.00	1/8 male	0.8	8	11	15	18	4.7	20	37	8	2.0
	5B3.309.1Y.AH.00	1/2	1.9	90	127	180	221	55.8	64	84	14	3.5
	5B3.379.1Y.AN.00	1	2.1	130	184	260	318	80.7	64	84	18	5.2
	5B3.539.1Y.AW.00	2	3.1	335	474	670	821	207.8	90	111	24	5.6



E = narrowest free cross-section

The maximum tank diameter shown above applies for the recommended operating pressure and is indicative only. The cleaning result is also affected by the type of soiling.

## Welded connection



## Welded connection according to ISO 2037

Spray angle 	Ordering no.	E Ø [mm]	V̇ [l/min]					Dimensions [mm]			Max. tank diameter [m]
	Type		p [bar] (p <sub>max</sub> = 5 bar)					Ø D	Height H	Dimensions of the connection piece	
			0.5	1	2	3	at 40 psi [US gal/min]				
360° 	5B2.879.1Y.W1.20	0.8	8	11	15	18	4.7	20	37	OD 12 ID 10	2.0
	5B3.089.1Y.W1.20	1.0	25	35	50	61	15.5	28	42	OD 12 ID 10	2.2
	5B3.209.1Y.W1.70	1.5	50	71	100	123	31.0	28	42	OD 17.2 ID 15.2	2.5
	5B3.309.1Y.W2.50	1.7	90	127	180	221	55.8	64	84	OD 25 ID 22.6	3.5
	5B3.379.1Y.W2.50	2.1	130	184	260	318	80.7	64	84	OD 25 ID 22.6	5.2
	5B3.449.1Y.W3.80	3.0	205	290	410	502	127.2	64	84	OD 38 ID 35.6	5.4

E = narrowest free cross-section

The maximum tank diameter shown above applies for the recommended operating pressure and is indicative only. The cleaning result is also affected by the type of soiling.