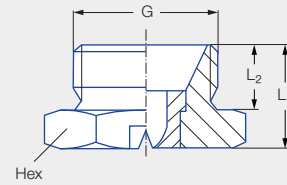
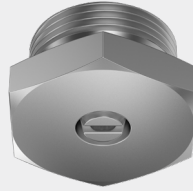


# Low pressure flat fan nozzles Series 616/617



### Features:

- Uniform, parabolic liquid distribution
- Stable spray angle
- Compact design for narrow installation conditions



### Applications:

- Spray cleaning
- Surface cleaning
- Filter cleaning
- Coating processes
- Belt cleaning
- Lubrication processes

Series 616/617

G	Dimensions [mm]			Weight [g] Brass
	L <sub>1</sub>	L <sub>2</sub>	Hex	
3/4 BSPP	19.0	12.0	32	75.0

Spray angle	Ordering no.				Equivalent bore diameter A [mm]	Narrowest free cross section Ø [mm]	V̇ water [l/min]						Spray width B [mm] (at p = 5 bar)		
	Type	Mat. no.					p [bar]						H = 250 [mm]	H = 500 [mm]	
		16	17 <sup>1</sup>	30			0.5	1.0	2.0	3.0	5.0	7.0			10.0
20°		Stainless steel 303	Stainless steel 316Ti/ Stainless steel 316L	Brass											
	616.721	●	●	●	3.00	2.50	3.15	4.45	6.30	7.71	<b>9.96</b>	11.78	14.09	100	180
	616.801	●	●	●	4.00	3.20	5.00	7.07	10.00	12.25	<b>15.81</b>	18.71	22.36	100	180
	616.881	●	●	●	5.00	4.00	8.00	11.31	16.00	19.60	<b>25.30</b>	29.94	35.78	100	180
	616.921	●	●	●	5.50	4.40	10.00	14.14	20.00	24.49	<b>31.62</b>	37.41	44.72	100	180
616.961	●	●	●	6.00	5.10	12.50	17.68	25.00	30.62	<b>39.53</b>	46.77	55.90	100	180	
30°	616.722	●	●	●	3.00	2.50	3.15	4.45	6.30	7.71	<b>9.96</b>	11.78	14.09	140	260
	616.762	●	●	●	3.50	2.80	4.00	5.66	8.00	9.80	<b>12.65</b>	14.97	17.89	140	260
	616.802	●	●	●	4.00	3.10	5.00	7.07	10.00	12.25	<b>15.81</b>	18.71	22.36	140	260
	616.882	●	●	●	5.00	4.00	8.00	11.31	16.00	19.60	<b>25.30</b>	29.94	35.78	140	270
	616.922	●	●	●	5.50	4.40	10.00	14.14	20.00	24.49	<b>31.62</b>	37.41	44.72	140	270
616.962	●	●	●	6.00	5.00	12.50	17.68	25.00	30.62	<b>39.53</b>	46.77	55.90	140	270	
45°	616.723	●	●	●	3.00	2.40	3.15	4.45	6.30	7.71	<b>9.96</b>	11.78	14.09	220	420
	616.763	●	●	●	3.50	2.60	4.00	5.66	8.00	9.80	<b>12.65</b>	14.97	17.89	220	420
	616.803	●	●	●	4.00	3.00	5.00	7.07	10.00	12.25	<b>15.81</b>	18.71	22.36	220	420
	616.843	●	●	●	4.50	3.40	6.25	8.84	12.50	15.31	<b>19.76</b>	23.38	27.94	220	420
	616.883	●	●	●	5.00	3.80	8.00	11.31	16.00	19.60	<b>25.30</b>	29.94	35.78	220	420
	616.923	●	●	●	5.50	4.20	10.00	14.14	20.00	24.49	<b>31.62</b>	37.41	44.72	220	430
	616.963	●	●	●	6.00	4.40	12.50	17.68	25.00	30.62	<b>39.53</b>	46.77	55.90	220	430

Spray angle	Ordering no.				Equivalent bore diameter A [mm]	Narrowest free cross section Ø [mm]	V̇ water [l/min]						Spray width B [mm] (at p = 5 bar)		
	Type	Mat. no.					p [bar]						H = 250 [mm]	H = 500 [mm]	
		16	17 <sup>1</sup>	30			0.5	1.0	2.0	3.0	5.0	7.0			10.0
		Stainless steel 303	Stainless steel 316Ti/ Stainless steel 316L	Brass											
60°	616.724	●	●	●	3.00	2.10	3.15	4.45	6.30	7.71	<b>9.96</b>	11.78	14.09	280	560
	616.764	●	●	●	3.50	2.30	4.00	5.66	8.00	9.80	<b>12.65</b>	14.97	17.89	280	570
	616.804	●	●	●	4.00	2.60	5.00	7.07	10.00	12.25	<b>15.81</b>	18.71	22.36	290	580
	616.844	●	●	●	4.50	3.00	6.25	8.84	12.50	15.31	<b>19.76</b>	23.38	27.94	290	580
	616.884	●	●	●	5.00	3.40	8.00	11.31	16.00	19.60	<b>25.30</b>	29.94	35.78	290	580
	616.924	●	●	●	5.50	4.10	10.00	14.14	20.00	24.49	<b>31.62</b>	37.41	44.72	290	580
	616.964	●	●	●	6.00	4.20	12.50	17.68	25.00	30.62	<b>39.53</b>	46.77	55.90	290	580
	617.044	●		●	8.00	5.50	20.00	28.26	39.97	48.95	<b>63.20</b>	74.78	89.38	290	580
617.124			●	10.00	7.40	31.50	44.54	62.99	77.15	<b>99.60</b>	117.85	140.86	290	580	
90°	616.726	●	●	●	3.00	1.80	3.15	4.45	6.30	7.71	<b>9.96</b>	11.78	14.09	520	980
	616.766	●	●	●	3.50	1.90	4.00	5.66	8.00	9.80	<b>12.65</b>	14.97	17.89	530	1,000
	616.806	●	●	●	4.00	2.40	5.00	7.07	10.00	12.25	<b>15.81</b>	18.71	22.36	530	1,030
	616.846	●	●	●	4.50	2.40	6.25	8.84	12.50	15.31	<b>19.76</b>	23.38	27.94	540	1,050
	616.886	●	●	●	5.00	3.10	8.00	11.31	16.00	19.60	<b>25.30</b>	29.94	35.78	540	1,060
	616.926	●	●	●	5.50	3.60	10.00	14.14	20.00	24.49	<b>31.62</b>	37.41	44.72	540	1,070
616.966	●	●	●	6.00	3.90	12.50	17.68	25.00	30.62	<b>39.53</b>	46.77	55.90	540	1,070	
120°	616.727	●	●	●	3.00	1.60	3.15	4.45	6.30	7.71	<b>9.96</b>	11.78	14.09	890	1,680
	616.767	●	●	●	3.50	1.70	4.00	5.66	8.00	9.80	<b>12.65</b>	14.97	17.89	900	1,700
	616.807	●	●	●	4.00	2.00	5.00	7.07	10.00	12.25	<b>15.81</b>	18.71	22.36	900	1,710
	616.887	●	●	●	5.00	2.60	8.00	11.31	16.00	19.60	<b>25.30</b>	29.94	35.78	910	1,710
	616.927	●	●	●	5.50	2.90	10.00	14.14	20.00	24.49	<b>31.62</b>	37.41	44.72	910	1,710
	616.967			●	6.00	3.20	12.50	17.68	25.00	30.62	<b>39.53</b>	46.77	55.90	910	1,710
617.047			●	8.00	4.40	20.00	28.26	39.97	48.95	<b>63.20</b>	74.78	89.38	910	1,710	

<sup>1</sup> We reserve the right to supply material 316Ti or 316L under material no. 17.

Conversion formula for this series:  $\dot{V}_2 = \dot{V}_1 \cdot \sqrt{\frac{p_2}{p_1}}$

Ordering Type + Material no. = Ordering no.  
example: 616.724 + 16 = 616.724.16



Assembly accessories can be found in Chapter 9 "Accessories".