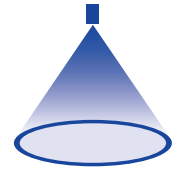


# ➤ Tangential-flow hollow cone nozzles

## Series 304/306/307

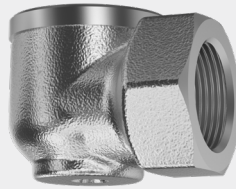


### Features:

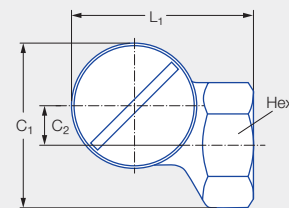
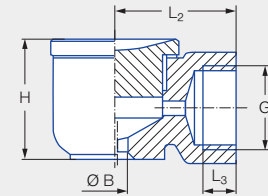
- Uniform atomization
- Non-clogging nozzle without swirl insert

### Applications:

- Storage tank cooling
- Foam control
- Dust control
- Surface spraying
- Absorption



Series 304/306/307



Series	G	Dimensions [mm]							Weight [g] (Brass)
		C <sub>1</sub>	C <sub>2</sub>	H	L <sub>1</sub>	L <sub>2</sub>	L <sub>3</sub>	Hex	
<b>304</b>	1/2 BSPP	43.0	11.0	33.0	46.0	30.0	11.0	27	205.0
<b>306/307</b>	3/4 BSPP	54.0	13.0	43.0	60.0	40.0	13.0	36	410.0

Spray angle	Ordering no.		Bore diameter B [mm]	Narrowest free cross section Ø [mm]	G ISO 228	V̇ water [l/min]								Spray diameter D [mm] (at p = 2 bar)		
	Type	Mat. no.				p [bar]								H = 250 [mm]	H = 500 [mm]	
		1Y				30	0.5	1.0	2.0	3.0	5.0	7.0	10.0			
90°	<b>304.706</b>	●	●	5.10	5.10	1/2	2.80	3.96	<b>5.60</b>	6.86	8.85	10.48	12.52	500	1,000	
	<b>304.796</b>	●	●	8.90	6.00	1/2	4.75	6.72	<b>9.50</b>	11.64	15.02	17.77	21.24	500	1,000	
	<b>306.906</b>	●	●	9.00	9.00	3/4	9.00	12.73	<b>18.00</b>	22.05	28.46	33.67	40.25	550	1,050	
	<b>306.976</b>	●	●	13.50	10.00	3/4	13.25	18.74	<b>26.50</b>	32.46	41.90	49.58	59.26	550	1,050	
130°	<b>304.818</b>		●	12.00	5.00	1/2	5.30	7.50	<b>10.60</b>	12.98	16.76	19.83	23.70	1,200	2,100	
	<b>304.898</b>	●	●	12.00	7.00	1/2	8.50	12.02	<b>17.00</b>	20.82	26.88	31.80	38.01	1,250	2,200	
	<b>306.978</b>		●	19.00	7.30	3/4	13.25	18.74	<b>26.50</b>	32.46	41.90	49.58	59.26	1,300	2,350	
	<b>307.018</b>	●	●	19.00	8.60	3/4	16.75	23.69	<b>33.50</b>	41.03	52.97	62.67	74.91	1,300	2,350	

Conversion formula for this series:  $\dot{V}_2 = \dot{V}_1 \cdot \sqrt{\frac{P_2}{P_1}}$

Ordering Type + Material no. = Ordering no.  
 example: 304.706 + 1Y = 307.706.1Y

Assembly accessories can be found in Chapter 9 "Accessories".